

PRODUCT CATALOGUE

BLUEMOTION®
AUTOMATION

 **HYPERTHERM®**
A Hypertherm Associates Brand
Authorized Partner

QT SERIES

PLATE - CNC PLASMA MACHINE



QT - 3015

| MODEL | CAPACITY (mm) | Applications/ Features |
|---------|----------------|--|
| | Width x Length | |
| QT-3015 | 3000x1500 | Best suited for sheets less than 25mm thick, Budget Friendly |
| QT-4020 | 4000x2000 | |

BLUEMOTION®
AUTOMATION

PLASMA OPTIONS



| PLASMA SOURCE | PIERCE CAPACITY (MS) |
|-------------------|----------------------|
| Powermax 45 SYNC | 12mm |
| Powermax 105 SYNC | 22mm |
| Powermax 125 SYNC | 25mm |

EXTRA OPTIONS

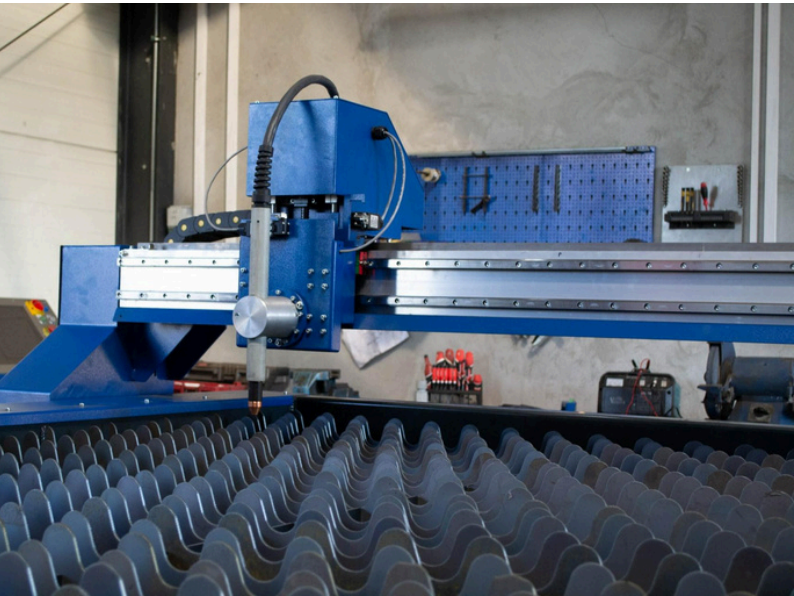
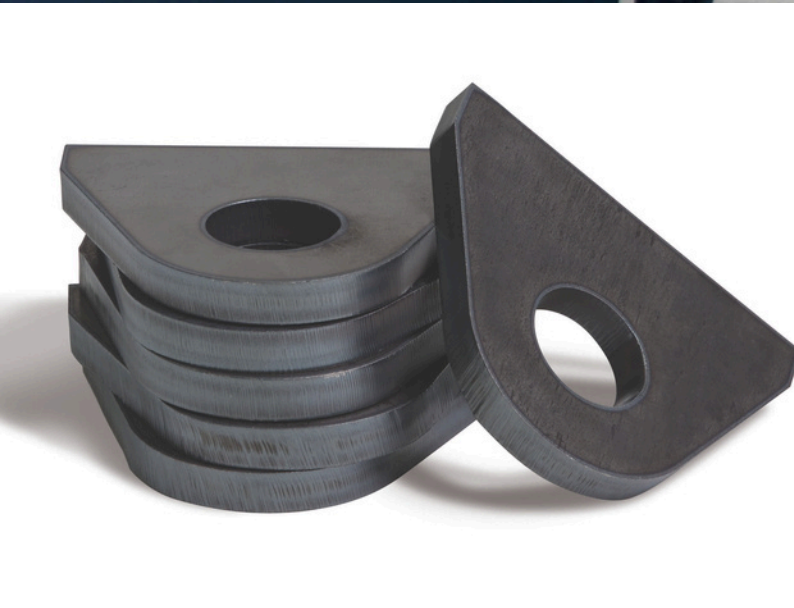
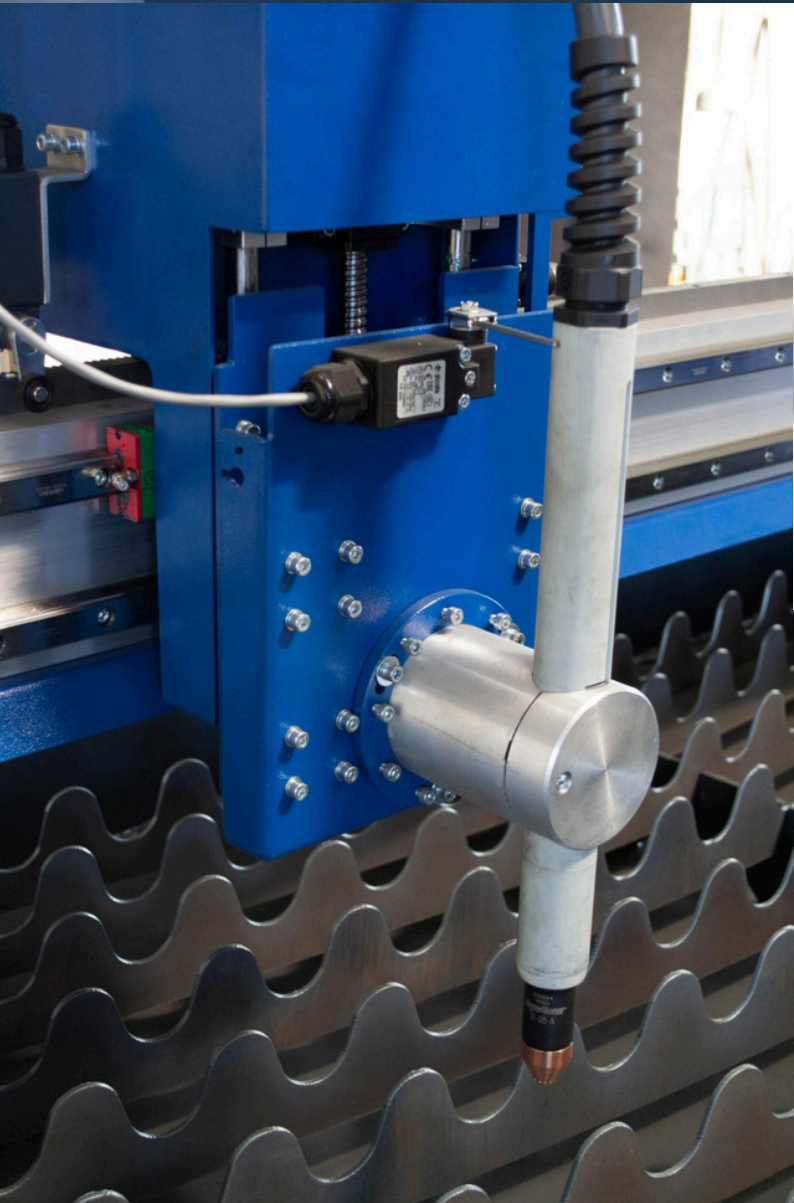
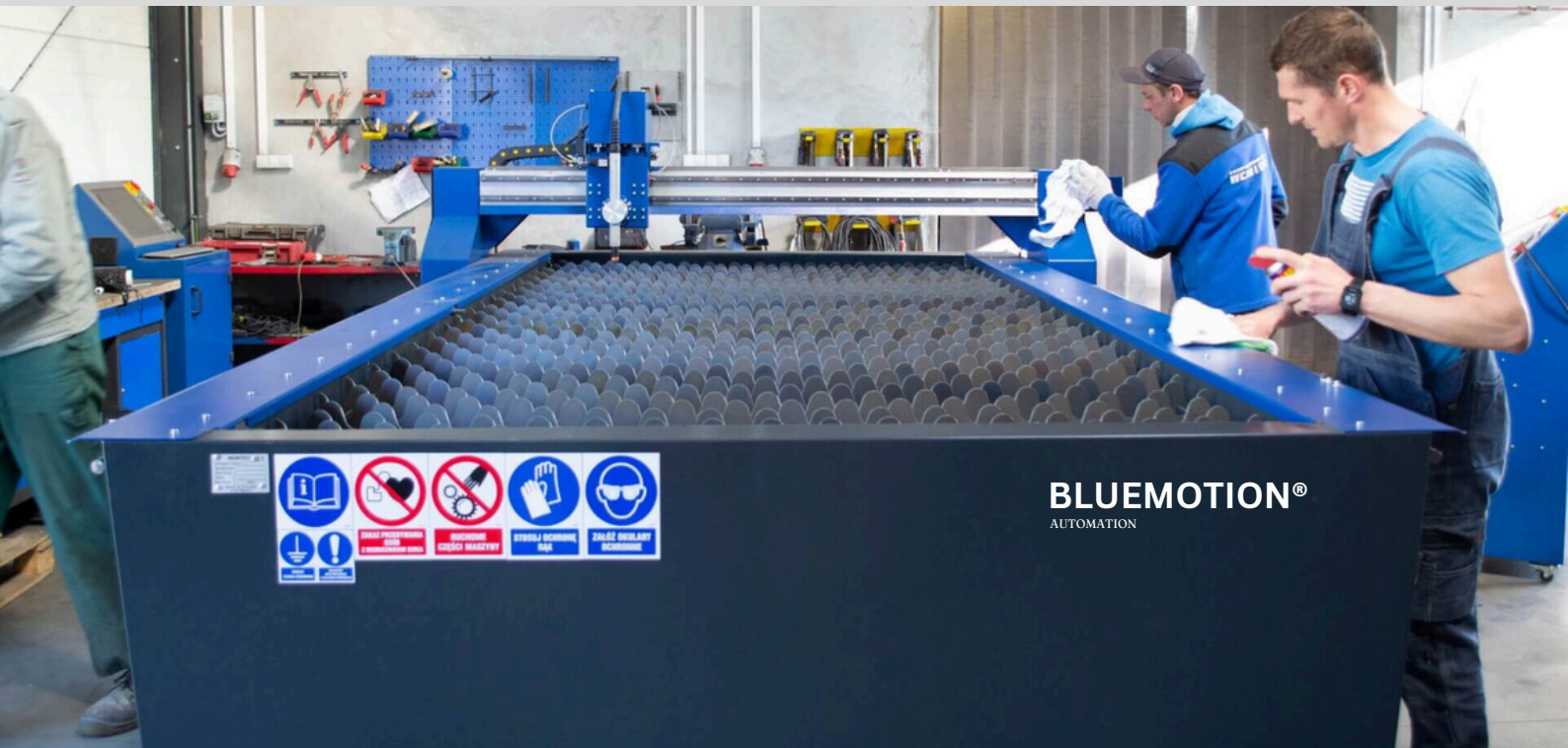
| ITEM | DETAIL |
|-----------------|---------------------------------------|
| FUME EXTRACTION | HERR FILTRATION AND EXTRACTION SYSTEM |

QT SERIES

PLATE - CNC PLASMA MACHINE

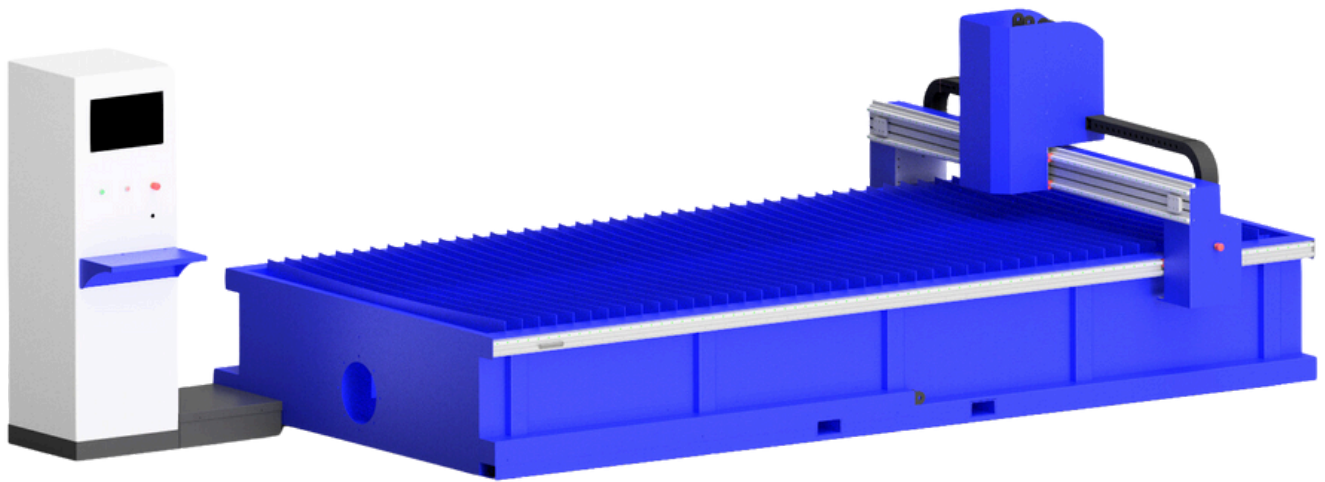
| Specifications | |
|-------------------------|---|
| WORK AREA (QT-3015) | 3000mm x 1500mm x 150mm (Length x Width x Height) |
| WORK AREA (QT-4020) | 4000mm x 2000mm x 150mm (Length x Width x Height) |
| MACHINE WEIGHT(QT-3015) | 1800 kg |
| MACHINE WEIGHT(QT-4020) | 2350 kg |
| TABLE LOAD CAPACITY | 5500 kg |
| TABLE STRUCTURE | Welded from thick-walled steel profiles |
| PRECISION MILLED RAILS | All Axis |
| TRAVEL SPEED | 20m/min |
| POSITIONING ACCURACY | 0.1mm |
| EXTRACTION BED | Zoned with grates, 250mm Round Output Pipe Connection |
| EXTRACTION DEMAND | 5000m ³ /h |
| TORCH HEIGHT CONTROLLER | YES |
| ANTI-COLLISION | YES |

PHOTOS



HD SERIES

INDUSTRIAL PLATE - CNC PLASMA MACHINE



HD - 4020

| MODEL | CAPACITY (mm) | Applications/ Features |
|---------|----------------|---|
| | Width x Length | |
| HD-3015 | 3000x1500 | Best suited for sheets less than 32mm thick, High Speed Machine |
| HD-4020 | 4000x2000 | |

PLASMA OPTIONS



| PLASMA SOURCE | PIERCE CAPACITY (MS) |
|-------------------|----------------------|
| Powermax 45 SYNC | 12mm |
| Powermax 105 SYNC | 22mm |
| Powermax 125 SYNC | 25mm |
| MAXPRO200 | 32mm |

EXTRA OPTIONS

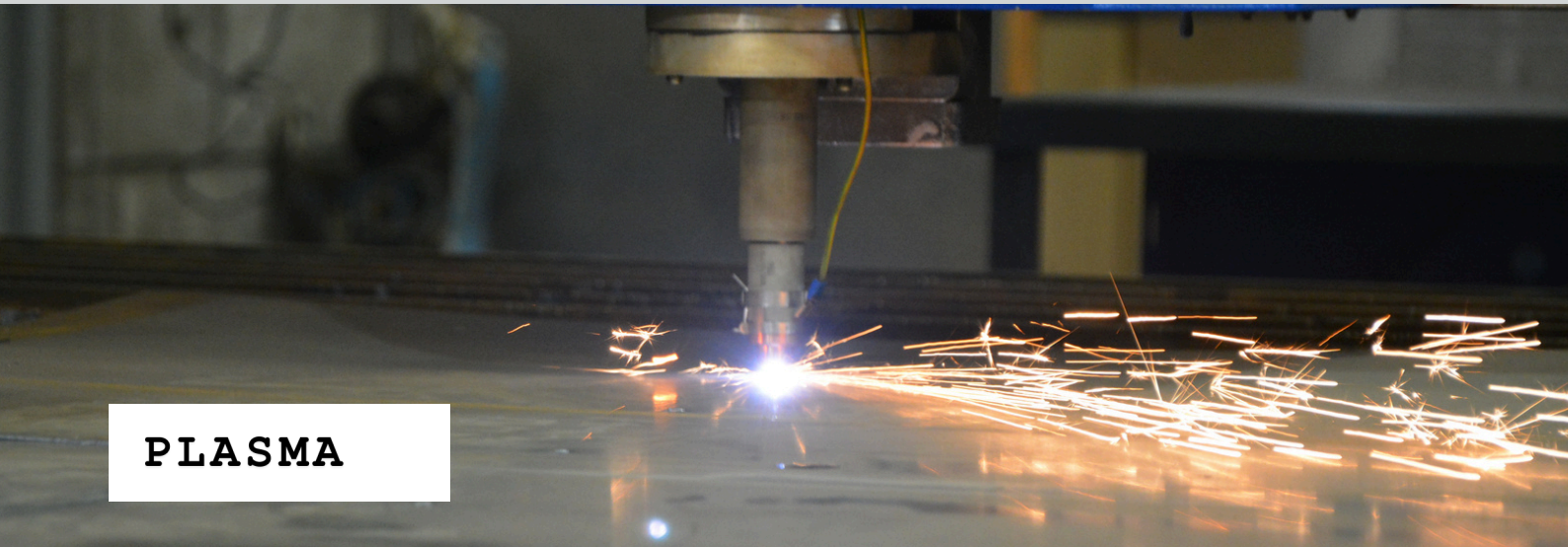
| ITEM | DETAIL |
|-----------------|---------------------------------------|
| SCRIBE | HIGH SPEED PLATE MARKER |
| LASER ALIGNMENT | FAST SHEET SETUP |
| DRILLING | FOR SMALL HOLES OF 8mm OR LESS |
| FUME EXTRACTION | HERR FILTRATION AND EXTRACTION SYSTEM |

HD SERIES

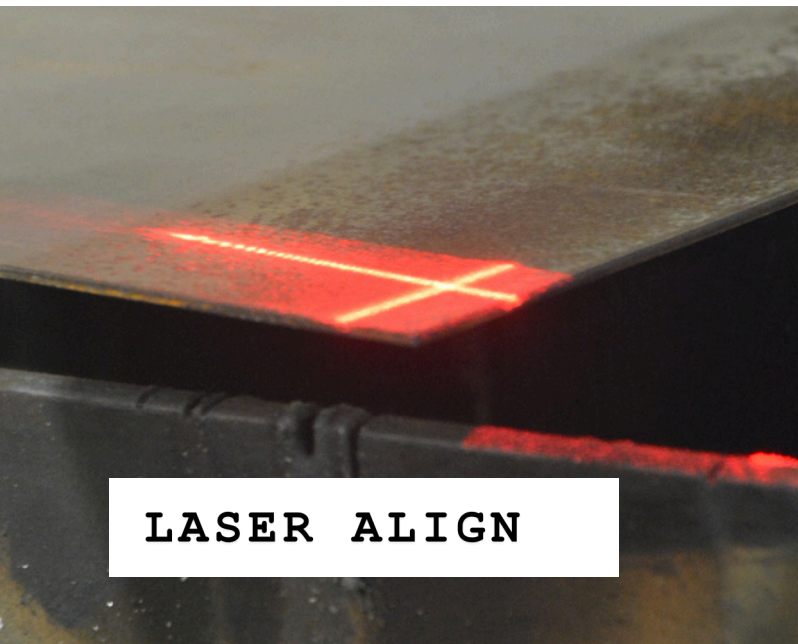
INDUSTRIAL PLATE - CNC PLASMA MACHINE

| Specifications | |
|-------------------------|---|
| WORK AREA (HD-3015) | 3000mm x 1500mm x 150mm (Length x Width x Height) |
| WORK AREA (HD-4020) | 4000mm x 2000mm x 150mm (Length x Width x Height) |
| MACHINE WEIGHT(HD-3015) | 2350 kg |
| MACHINE WEIGHT(HD-4020) | 2650 kg |
| TABLE LOAD CAPACITY | 9500 kg |
| TABLE STRUCTURE | Welded from thick-walled steel profiles |
| PRECISION MILLED RAILS | All Axis |
| TRAVEL SPEED | 30m/min |
| POSITIONING ACCURACY | 0.1mm |
| EXTRACTION BED | Zoned with grates, 300mm Round Output Pipe Connection |
| EXTRACTION DEMAND | 5000m ³ /h |
| TORCH HEIGHT CONTROLLER | Yes |
| ANTI-COLLISION | Yes |
| LASER ALIGNMENT | Yes |
| SCRIBE | Yes (Optional) |
| DRILLING | Yes (Optional) |

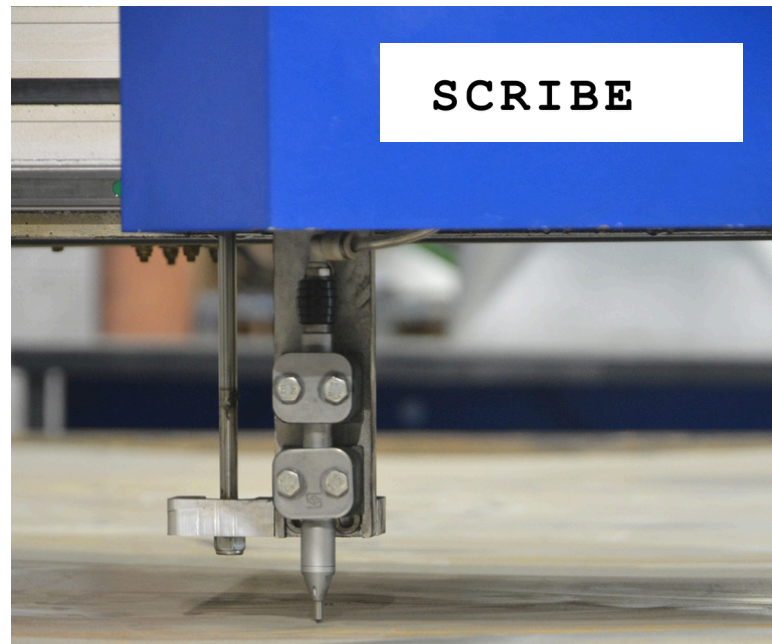
PHOTOS



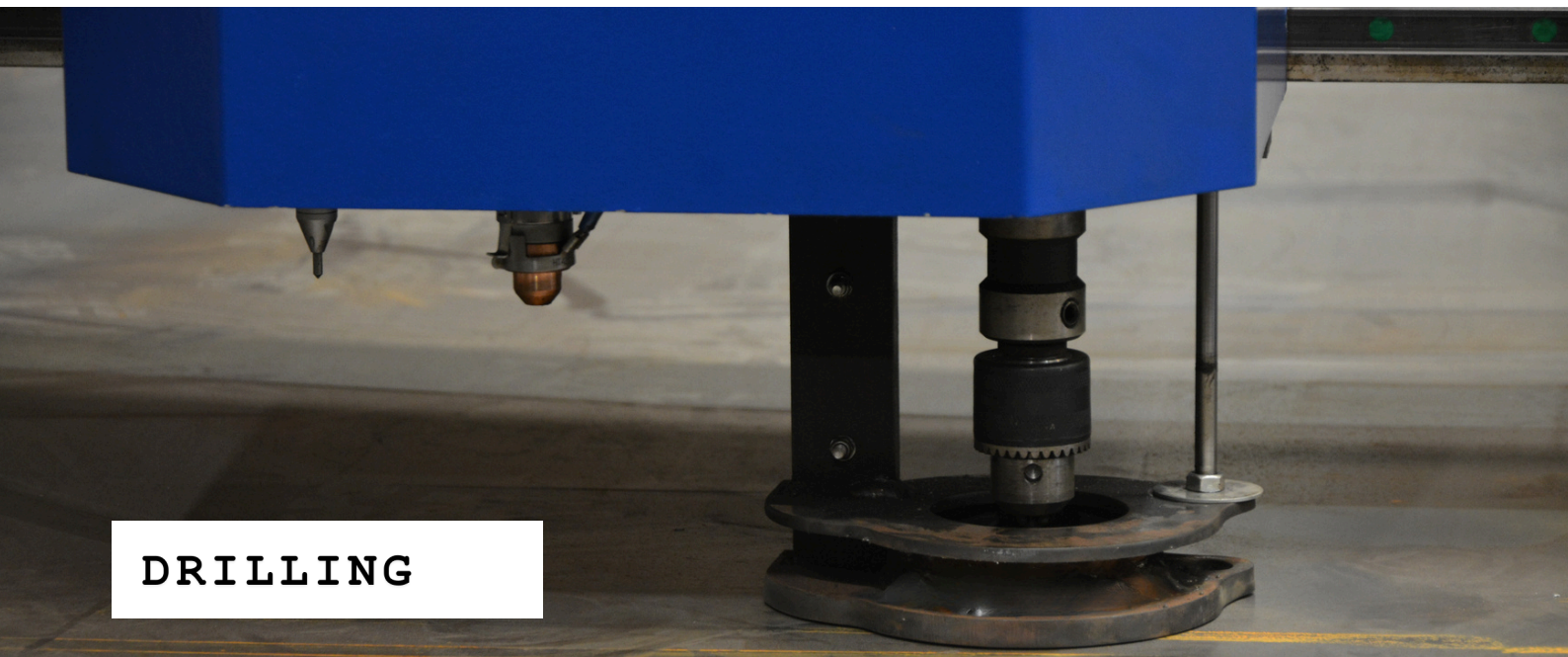
PLASMA



LASER ALIGN



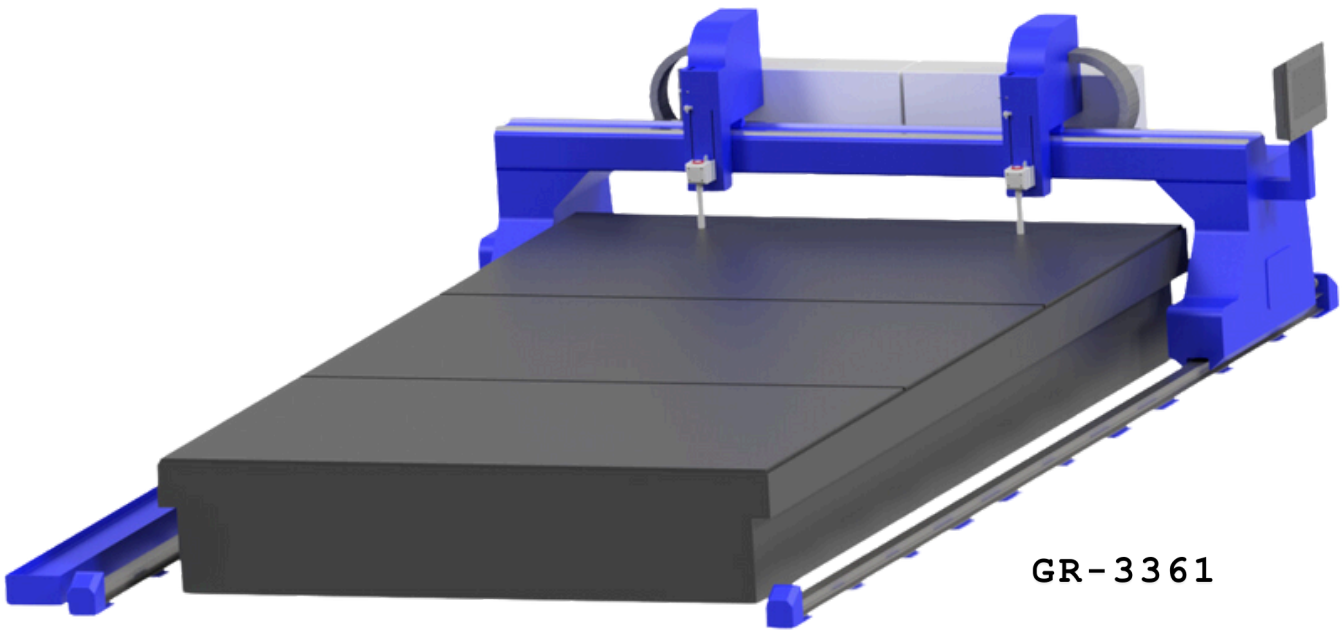
SCRIBE



DRILLING

GR SERIES

HEAVY INDUSTRIAL - CNC PLASMA MACHINE



GR-3361

| MODEL | CAPACITY (mm) | Applications/ Features |
|----------|----------------|---|
| | Width x Length | |
| GR-3320 | 3300x2060 | Heavy Industrial Cutting, High Definition Cutting, Heavy Plate Processing |
| GR-3341 | 3300x4120 | |
| GR-3361 | 3300x6180 | |
| GR-3382 | 3300x8240 | |
| GR-33103 | 3300x10300 | |
| GR-33123 | 3300x12360 | |

PLASMA OPTIONS



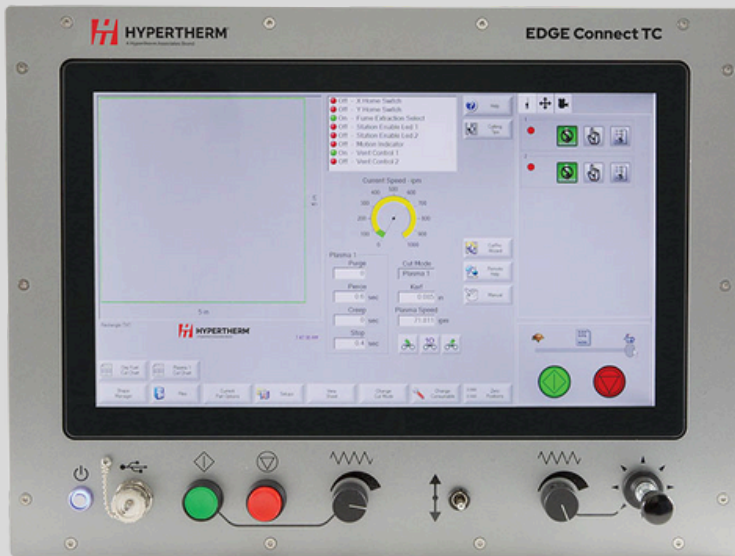
| PLASMA SOURCE | PIERCE CAPACITY (MS) |
|-------------------|----------------------|
| Powermax 125 SYNC | 25mm |
| MAXPRO200 | 32mm |
| XPR 170 | 40mm |
| XPR 300 | 50mm |
| XPR 460 | 64mm |

GR SERIES

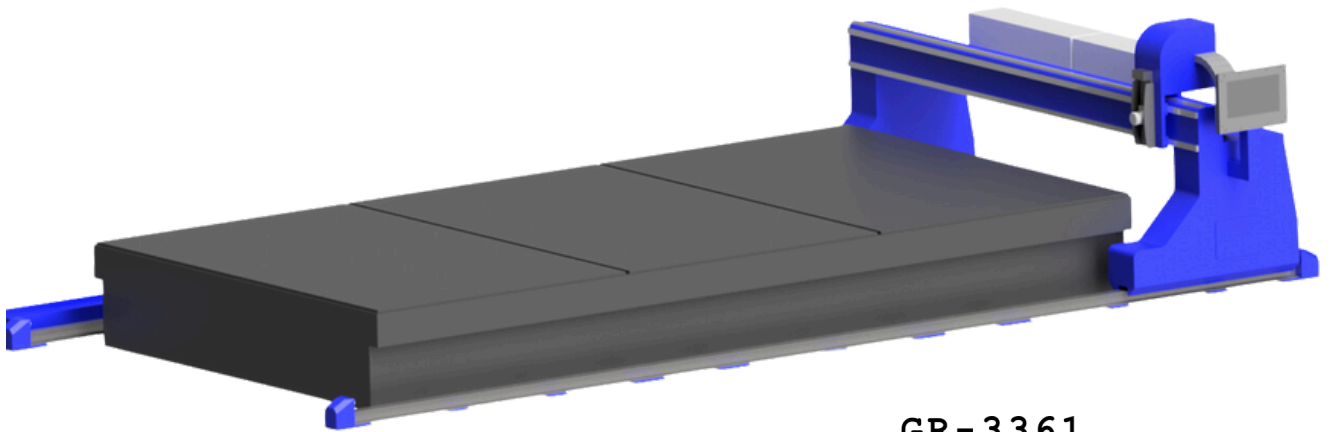
HEAVY INDUSTRIAL - CNC PLASMA MACHINE

| Specifications | |
|----------------------------|---|
| Z CLEARANCE | 250mm |
| NUMBER OF PLASMA STATIONS | Up to 4 |
| NUMBER OF OXYFUEL STATIONS | Up to 10 |
| TABLE STRUCTURE | Heavy Steel Rail and Heavy Welded Profiles |
| PRECISION MILLED RAILS | All Axis |
| TRAVEL SPEED | 30m/min |
| POSITIONING ACCURACY | 0.1mm |
| EXTRACTION BED | Zoned with grates, 400mm Round Output Pipe Connection |
| EXTRACTION DEMAND | 8000m ³ /h |
| TORCH HEIGHT CONTROLLER | Yes |
| ANTI-COLLISION | Yes |
| LASER ALIGNMENT | Yes |
| CONTROLLER | Hypertherm EDGE CONNECT TC |
| DRIVE SYSTEM | EtherCAT Servo Motors on all axis |
| DUAL GANTRY | Yes (Optional) |
| TRUEHOLE | Yes |
| HIGH DEFINITION | Yes |

POWERED BY
HYPERTHERM



**HYPERTHERM
CONTROLLER**



GR-3361

H **HYPERTHERM**
A Hypertherm Associates Brand

INTRODUCING THE NEW

XPR460
PLASMA SYSTEM

Power your
profitability

H **HYPERTHERM** **XPR460**
A Hypertherm Associates Brand

PT SERIES

PROFILE - CNC PLASMA MACHINE



PT-3015

| MODEL | CAPACITY (mm) | Applications/ Features |
|---------|---------------|-------------------------------------|
| | Length | |
| PT-3015 | 3000 | Automated tube coping and profiling |
| PT-6015 | 6000 | |

BLUEMOTION®
AUTOMATION

PLASMA OPTIONS



| PLASMA SOURCE | PIERCE CAPACITY (MS) |
|-------------------|----------------------|
| Powermax 45 SYNC | 12mm |
| Powermax 105 SYNC | 22mm |
| Powermax 125 SYNC | 25mm |

EXTRA OPTIONS

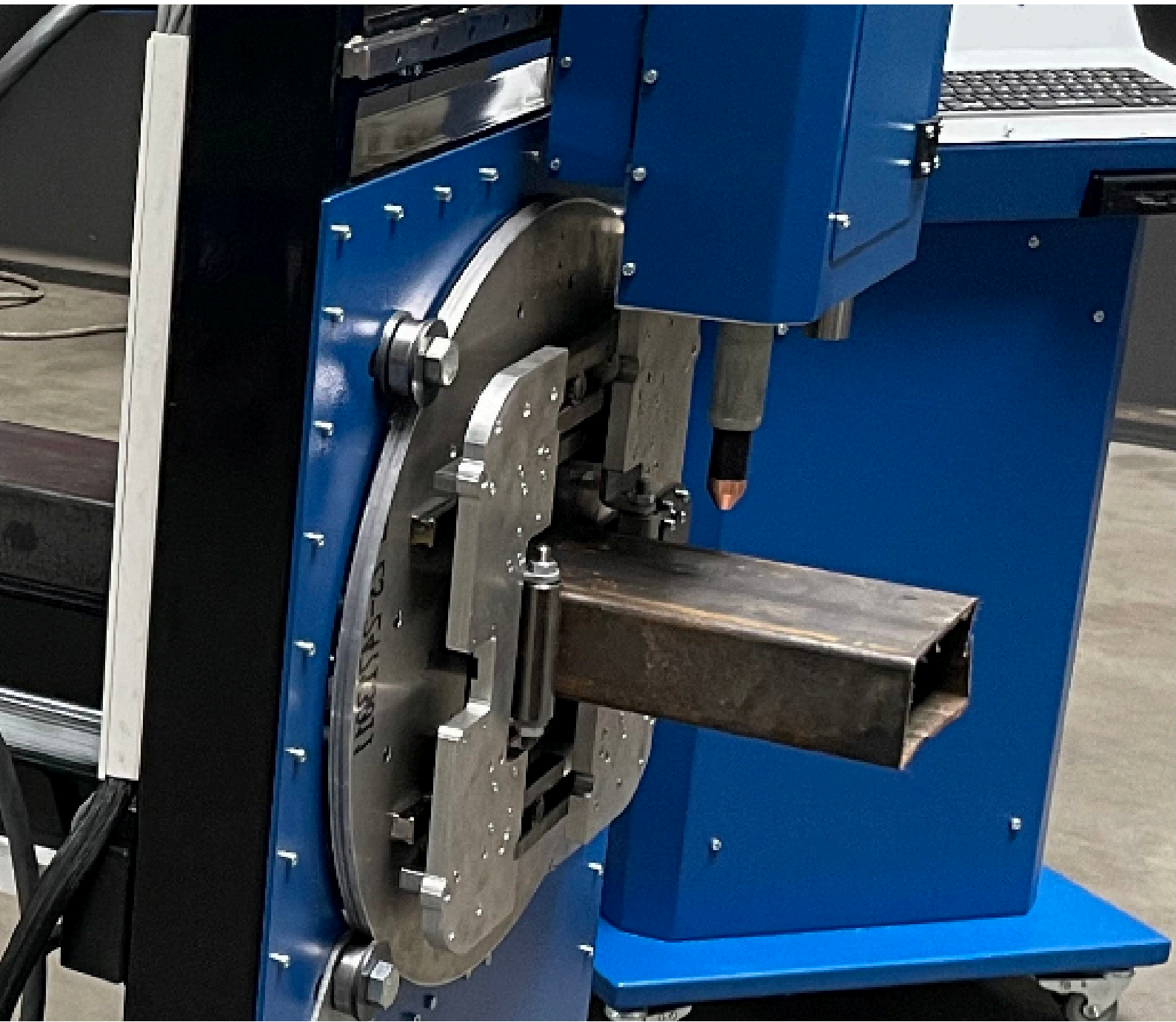
| ITEM | DETAIL |
|-----------------|---------------------------------------|
| FUME EXTRACTION | HERR FILTRATION AND EXTRACTION SYSTEM |

PT SERIES

PROFILE - CNC PLASMA MACHINE

| Specifications | |
|--------------------------------|--|
| WORK LENGTH CAPACITY (PT-3016) | 3000mm |
| WORK LENGTH CAPACITY (PT-6016) | 6000mm |
| PROFILE CAPACITY | 160mm x 160mm (SQUARE), 160mm Diameter (ROUND) |
| WORK WEIGHT CAPACITY | 500 kg |
| MACHINE WEIGHT (PT-3016) | 450 kg |
| MACHINE WEIGHT (PT-6016) | 550 kg |
| MACHINE DIMENSIONS (PT-3016) | 3700mm x 1250mm x 1100mm (Length x Width x Height) |
| MACHINE DIMENSIONS (PT-6016) | 6700mm x 1250mm x 1100mm (Length x Width x Height) |
| TRAVEL SPEED | 20m/min |
| POSITIONING ACCURACY | 0.1mm |
| TABLE STRUCTURE | Welded from thick-walled steel profiles |
| STEADY REST | Yes (PT-6016 model only) |
| TORCH HEIGHT CONTROLLER | Yes |
| ANTI-COLLISION | Yes |
| THROUGH COOLANT | Yes |

PHOTOS



Air plasma: Powermax®

Light industrial single gas (air, nitrogen, or F5) cutting systems, great for duct cutting, pipe cut-off, beveling, and robotic cutting.



HyPerformance plasma

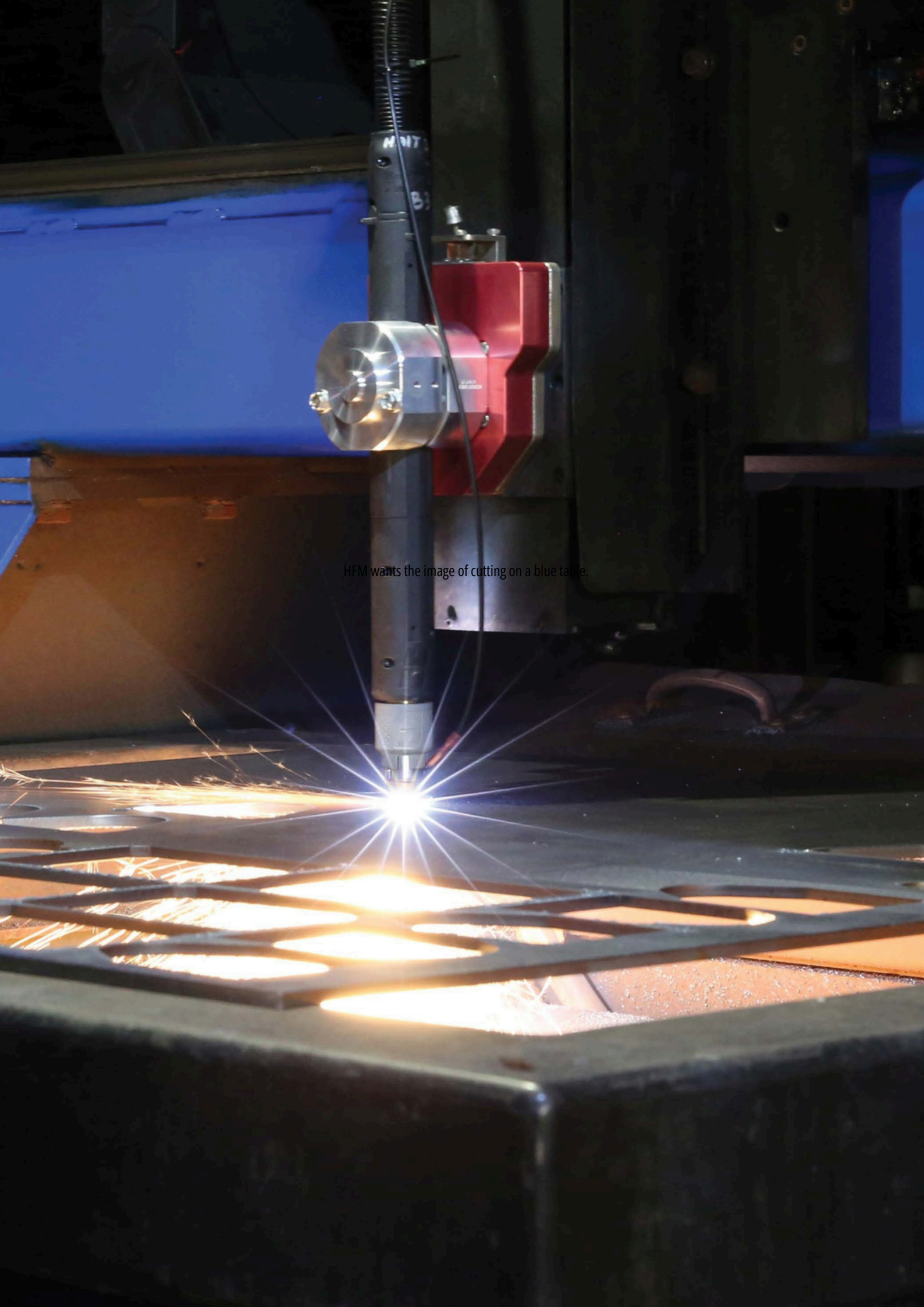
HyPerformance plasma systems deliver HyDefinition® cut quality at a fraction of the operating costs. By incorporating our proven HyDefinition, LongLife®, PowerPierce®, HDi® and True Hole® technologies, HyPerformance plasma boosts overall performance, productivity and profitability. The systems offer unmatched process flexibility to cut, bevel and mark metals, including 3D shapes, up to 160 mm (6-1/4") thick.



XPR® plasma

XPR plasma represents the most significant advance in mechanized plasma cutting technology, ever. This latest generation system redefines what plasma can do by expanding its capabilities and opportunities in ways never before possible. With unmatched X-Definition® cut quality on mild steel, stainless steel and aluminum, XPR increases cut speed, dramatically improves productivity and significantly reduces operating costs. New ease-of-use features and engineered system optimization make XPR easier to run with minimal operator intervention, while also ensuring optimal performance and unmatched reliability.





HFM wants the image of cutting on a blue table.

BLUEMOTION®

AUTOMATION



089 952 6274



info@blueemotioncnc.com



www.blueemotioncnc.com



Ballynoe, Cork, Ireland

